

Game Trails of Zimbabwe & Botswana Camping Safari

Trip Code: ZAC

Version: ZAC Game Trails of Zimbabwe & Botswana - Camping



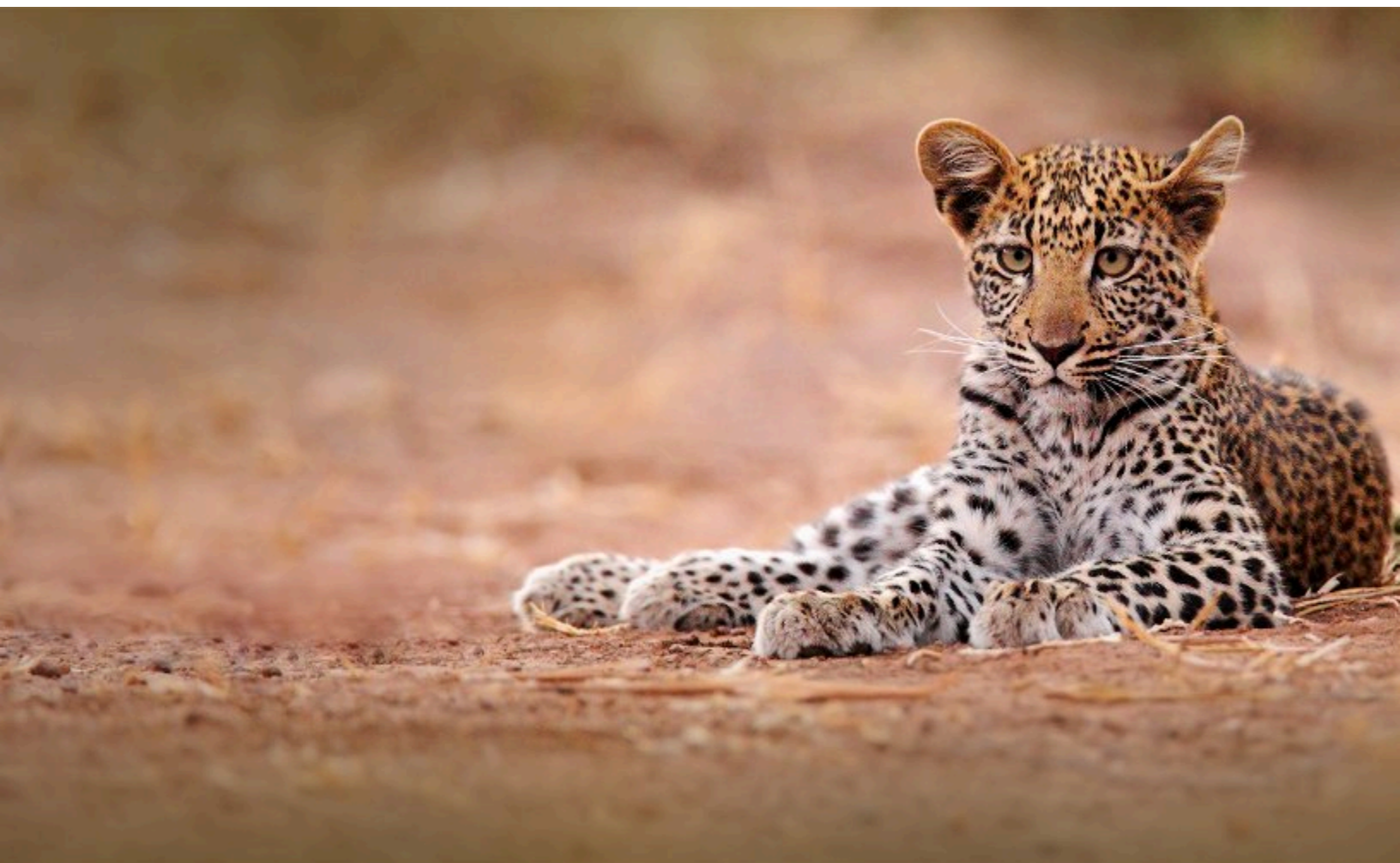
WILDLIFE



GUIDED GROUP



LEISURELY



HIGHLIGHTS

- Explore the Okavango Delta walking and in a mokoro Canoe, see rhino at the Khama Sanctuary
- See the might and magnificent Victoria Falls, and the ancient UNESCO Shona City in Great Zimbabwe

- Game drives in National Parks of Kruger in South Africa, Hwange in Zimbabwe and Chobe in Botswana
- Look out for the Big 5: elephants, lion, buffalo, leopard and rhino as well as giraffe and zebra herd
- Camping safari, staying at many beautiful sites, some with pools and bars

AT A GLANCE

- 16 days sightseeing with safari game drives and short walks and over 4000km of overlanding in between
- Join at Johannesburg

ACCOMMODATIONS & MEALS

- 15 Breakfasts
- 13 Lunches
- 11 Dinners
- 1 nights Hotel
- 13 nights Camping
- 2 nights Wild Camp

[VIEW DATES, PRICES & BOOK YOUR HOLIDAY HERE](#)

Introduction

This overland camping safari adventure takes us through three countries: South Africa, Zimbabwe and Botswana. Our first experience are game drives in the famous Kruger National, where we have the possibility of seeing big cats, rhino and herds of buffalo, zebra and wildebeest. We cross the border into Zimbabwe where our first stop is the UNSECO World Heritage ruins of Great Zimbabwe with its towers and fortified walls. It's then onto Matobo National Park, where we experience the unforgettable maze of giant kopjes (granite rocks), perched atop of each other, and sunset rhino viewing opportunities. The following days' at Hwange National park is a supreme experience to track the abundant elephant, leopard and wild dog populations. We have a day at the dramatic Victoria Falls before crossing into Botswana and Chobe National Park for a sunset safari cruise amidst the hippo and elephant. Our grand finale to this natural world experience is the world-famous, and UNSECO site, The Okavango Delta. Here, we travel by traditional mokoro canoes to our wild campsite, to seek out hippo, lion, cheetah, hyenas, elephant and the plentiful birdlife. Completing our overland journey of some 4000km, we return to Johannesburg via the Khama Rhino Sanctuary for a vibrant end to this supreme safari adventure.

Camping not your thing? Take a look at our lodge safari version of this itinerary, here: [Game Trails of Zimbabwe and Botswana - Lodge](#)

If you would like further information on when to go to Southern Africa on safari and which trip suits you the best please refer to our detailed guide: [Which safari is right for you?](#)

Is this holiday for you?

Everything in Africa is on a big scale, and to cover the ground necessary, your journey across Southern Africa includes several long drives accompanied by Africa's spectacular scenery. Such drives, including your game drives, can often be on dirt tracks, graded roads and also tar highways. The driving times are indicated on each day. These times do not include stops along the way. We ensure that regular comfort breaks are taken, and stops try to be scheduled to visit interesting towns or sights.

Included in the itinerary are a variety of walks. These walks can be on paved surfaces, uneven sandy dunes or rocky terrain and are always accompanied by your experienced guide. Each walk is paced with time for your guide to interpret the environment around you. On some walks, it is vital to keep within the group in case of an animal encounter. When in the Okavango Delta we travel by mokoro canoe. These are traditional dug-out canoes and we may have to walk in the shallows to board at water level.

The majority of nights you will be camping. Designated campsites have showers and some have a bar and swimming pool. There are also 2 nights that we wild camp. You will need to put your tent up, and help pack up the truck in the mornings. Most of the meals are prepared by the guides and it is good group etiquette to help with preparation and washing up on these days and this is usually done on rotation - it's all part of the adventure and when everyone puts in a little effort the trip runs smoothly. This journey is suitable for the adventure traveller looking to experience some of Africa's most special safari experiences.

Itinerary

Version: ZAC Game Trails of Zimbabwe & Botswana - Camping

DAY 1

Meet at Johannesburg Airport. Transfers to the group hotel are provided.

Your holiday starts at the group hotel near Johannesburg Airport. Airport transfers to the group hotel are provided. The rest of the day is yours to either relax or explore Johannesburg. We can arrange half-day tours of Soweto or Maropeng Cradle of Humankind.



Accommodation
Hotel

DAY 2

Drive to Kruger National Park. Afternoon of game viewing looking for rhino, big cats and elephant.

With an early departure we head north-east to Kruger National Park for our first Southern African safari experience. This is South Africa's premier national park for viewing Big Game. Established in 1898 to protect the wildlife of the South African Lowveld, this national park of almost 20,000 square kilometres is unrivalled in terms of biodiversity and is a world leader in advanced environmental management policies. Kruger is home to an impressive number of species, including the Big Five: lion, leopard, black rhino, elephant and Cape Buffalo. We spend our first night in the African bush and enjoy our first African sunset and accompanying sundowner (pre-dinner drink at sunset).

Approximate drive time: 8 hours. With stops and lunch a total travel day of 10-11hrs.

Meals: **L D**



Accommodation
Camping

DAY 3

Game drives in Kruger Letaba and Pafuri regions to look for large elephant bulls, wild dogs and lions.

This morning we wake early and game drive north through the park to the Pafuri region. The northern

Kruger is dominated by mopane veld and is the domain of large elephant bulls, wild dog and lions. There are many antelope in the park, including Eland, the smaller Steenbok and the most common, skittish Impala and fancy horned Kudu. As we reach the Limpopo Valley the vegetation changes to forest and birdlife is prolific. Kruger is a super place to start our safari adventure as it's so iconic and packed full of exciting wildlife. We exit the park, late in the afternoon to our campsite.

Approximate game drive time: 8 hours. With stops and lunch a total travel day of approximately 10 hours.

Meals: **B L D**



Accommodation
Camping

DAY 4

Cross the border into Zimbabwe and visit the UNESCO site of the Great Zimbabwe Ruins.

Leaving South Africa we cross our first border at Zimbabwe's panoramic Beit Bridge. After processing formalities, we venture onto one of Southern Africa's most treasured sights, the ruins of Great Zimbabwe. According to legend, this ancient land of the Queen of Sheba and its well preserved ruins, some of the largest stone structures in Southern Africa, are an exceptional testimony to the Bantu civilisation of Shona spanning 11th to 14th centuries.

Approximate drive time: 6-7 hours. Including stops and border crossings a travel day of approximately 9-10 hours.

Meals: **B L D**



Accommodation
Camping

DAY 5

Head to the granite kopjes of Matobo National Park for sundowners with a view.

We have a guided walk around these Great Zimbabwe Ruins. They predominately are divided into three sections: The Hill Ruins, The Great Enclosure and the Valley Ruins and our guide will passionately give us insight into them. We then leave the area and drive via the bustling town of Bulawayo, to the Matobo National Park. With an abundance of majestic viewpoints, the bald granite peaks of the UNESCO Matobo Hills are home to an array of ancient bushman paintings and wide variety of animal species such as Kudu, Duiker, Rock Dassies and Eland. We relax on arrival and enjoy a sundowner from the granite ridge overlooking the park.

Approximate drive time: 5 hours. Including stops a travel day of approximately 6-7 hours.

Meals: **B L D**



Accommodation
Camping

DAY 6

Matobo National Park game drive and walk to see if we can spot Zimbabwe's Rhino.

This morning we visit World's View and the historical site of Cecil John Rhodes' grave. We explore the park in our vehicle and head out on foot, and this is really the best way to appreciate the size and splendour of this most unique national park as we hope to spot impala, rock hyrax and birdlife. During our game drive and walks we visit the ancient bushman paintings which are hidden in between these unusual rock formations. This area is also home to Zimbabwe's Rhino which we hope to see on our excursion in the national park. After a full and exhilarating day we return to our campsite for a second night.

Meals: **B L D**



Accommodation
Camping

DAY 7

Zimbabwe's Hwange National Park home to one of the world's largest elephant populations.

With an early start we head into our first 'Big 5' Zimbabwe National Park - Hwange. Named after a local Nhanzwa chief, this is the country's largest National Park and it is rich in wildlife. Famed for its enormous elephant population, is it also full of lions, hyenas, giraffes, cheetahs and one of the largest surviving populations of wild dogs in Africa. Due to the parks vast size the vegetation and game varies greatly from desert scrub through to granite kopjes and mopane woodlands in the north. Our camp for the next two nights is in the game management area that borders the park, and provides the perfect vantage point to hear the evening song of Zimbabwe's night life.

Approximate drive time: 5 hours. With stops a total travel day of approximately 5-6 hours.

Meals: **B L D**



Accommodation
Camping

DAY 8**Full day game drive in Hwange National in open sided 4WD. Can you spot the 'Big 5'?**

Today we are treated to a full day game drive in this fantastic national park. Our open sided 4WD vehicle is perfect for this experience, and our guides will educate us with interesting facts from the smallest dung beetle to the largest ears of the elephants. There are many waterholes which are a magnet for the wildlife and it's likely we'll see matriarchs with their herds. Lions are prone to lazing in the shade under the acacia trees in the heat of the day, whereas the ever moving antelope stay in the open, darting their eyes in search of the predators. Whatever we see and discover it'll be sure to be a magical experience seeing this incredible African wildlife.

Full day game drive.

Meals: **B L D**



Accommodation
Camping

DAY 9**Travel to the iconic natural wonder of Zimbabwe, Victoria Falls.**

Not far from Hwange is one of the most iconic natural features of Africa - Victoria Falls. This incredible natural wonder is twice as high as Niagara and spans 2km. Over 1000 cubic metres of water flows over the falls every second, plunging 108 metres into the gorge below*. With plenty to explore, we have two nights at the world's greatest waterfall.

Approximate drive time: 3 hours. With a visit to the Painted Dog Sanctuary a total travel day of approximately 4 hours.

*Please note, depending on the season, the water levels of the falls will vary. From late November to early April is the wet season for the upper reaches of the Zambezi and this is when the falls are at their loudest and most impressive. From April the flow gradually reduces, although this mostly affects the Zambia side and there is always a good flow over the rim on the Zimbabwe side of the falls.

Meals: **B**



Accommodation
Camping

DAY 10

A full day at the mighty Victoria Falls, Mosi-oa-Tunya.

We have a full day here at Victoria Falls. Locally known as Mosi-oa-Tunya, which translates to the 'Smoke that Thunders', there are many superb vantage points to view Victoria Falls in her full glory, which includes the iconic Victoria Falls Bridge, commissioned by Cecil John Rhodes in 1900 and spans the immense gorge. You may choose to meander through the handicraft markets for a last minute souvenir, or simply relax. If you are feeling a little more adventurous or wish to see the falls from a different angle, you may wish to consider one of the extra activities that are available to book and payable locally. These include white water rafting or a half-day canoeing the Zambezi. Whatever you chose you'll have a fabulous day on this incredible journey through Southern Africa.

Meals: **B**



Accommodation
Camping

DAY 11

Enter Botswana, drive to Kasane and Chobe NP. Afternoon game viewing cruise.

Leaving behind Zimbabwe we cross into the laid-back nation of Botswana, destination Kasane. Chobe National Park is a great start to our time in Botswana. During the year the elephant population can vary from 500-50,000 and are most likely to be found on the banks of the Chobe River, cooling off. Wild dog, zebra and the endemic Chobe Puku antelope are also present in the park. Taking to the water in the afternoon, we embark on a sunset safari cruise to optimise our chances to meet herds of these majestic animals. Finishing the safari we head to campsite and our first evening in Botswana.

Approximate drive time: 1 hour. With border crossings a total travel day of approximately 3 hours.

Meals: **B L D**



Accommodation
Camping

DAY 12

Optional additional Chobe National Park game drive. Drive to Gweta on the edge of the Makgadikgadi Salt Pans.

Before driving south there is time this morning for an optional early morning game drive in Chobe National Park. Our drive onwards from Kasane takes in the forest reserve, which is an exceptional example of managing human and wildlife habitation. We arrive at Gweta in the late afternoon where we find our campsite nestled at the base of ancient baobab trees.

Approximate drive time: 4 hour. With lunch and stops a total travel day of approximately 4-5 hours on

good roads.

Meals: **B L**



Accommodation
Camping

DAY 13

Transfer by 4WD and mokoro canoe to our private Okavango Delta camp. Afternoon walking safari to look for elephant, hippo and giraffe.

We set off early this morning to drive to Maun. We transfer into our open 4WD vehicles and drive into Okavango Delta. Every year, over 11,000 cubic kilometres of water flows from the Angolan Highlands into the delta, making it the world's largest inland delta. Okavango's diversity stretches across 10,000 square miles and provides one the finest arena's to experience Botswana's wild side. We meet our local guides with their mokoro's, traditional dug-out canoes, at the water's edge and we complete our journey on the river being poled along with the chance to spot the wildlife of the river, such as hippo and elephant.

Around midday we arrive at our wilderness camp and in the late afternoon we continue our exploration on foot. Before the walk our guides will give a safety briefing. We may encounter elephants, giraffe, zebra, red lechwe and even lions, on our walk and it is important to follow the instructions of the guides. After our walk we return to our camp for a traditional African 'sundowner'. We help out with the preparation of dinner and afterwards we settle down for the night in the delta accompanied by the soundtrack of croaking frogs and grunting hippos. It's incredible.

Approximate drive time 4 hours to Maun. 2 hour transfer by 4X4. Total travel time including driving and mokoro (canoe) to camp approximately 7 hours.

Meals: **B L D**



Accommodation
Wild Camp

DAY 14

Walking and mokoro canoe exploration of the UNESCO listed Okavango Delta waterways and pools, hoping to see further wildlife and birds.

The best time of the day in Africa is the early morning and with the sounds of the dawn chorus all around us we set out in the relative cool on a nature walk to explore this wonderful wetland. Returning to our camp for a well-deserved brunch we have time to relax during the heat of the day. We head out again into the delta where we can enjoy another beautiful sunset on the mokoros before returning to camp or we may take another walk. Alongside the elephant and hippo we might also see wildebeest, impala

mixed in with the giraffe and zebra munching on the lush vegetation of the delta and maybe some hyena. If we are extremely lucky we might glimpse a leopard and even rhino have been seen in this area in recent years. We settle down for a second night in this magical place.

Meals: **B L D**



Accommodation
Wild Camp

DAY 15

Return to Maun.

An early departure from the Delta provides us with a magnificent opportunity to catch the early chorus of Okavango's resident game as we make our way back to Maun. This afternoon we have some time to relax or enjoy optional extras from Maun. At the campsite we can relax by the pool or we can explore the town which is the capital of Ngamiland, with a laid back atmosphere and several shops selling local handicrafts.

Approximate transfer time 2 hours. Total travel time including 4x4 driving and mokoro (canoe) to camp approximately 3-4 hours.

Meals: **B L**



Accommodation
Camping

DAY 16

Drive south to the Khama Rhino Sanctuary on the Botswana/South Africa border.

Heading south from Maun, we drive through wide open spaces on our way to the Khama Rhino Sanctuary. This community wildlife project, was established in 1992 to assist the plight of dwindling rhino populations and restore an area formerly teeming with wildlife to its previous natural state, and to provide economic benefits to the local Batswana community through tourism and the sustainable use of natural resources.

We head out into the sanctuary on a game drive hoping to spot the endangered Rhino. With a number of lush waterholes, Khama supplies the perfect habitat for rhinos to breed. Whilst the focal point of this visit is the rhinos, 230 species of birdlife and towers of giraffe all flourish within this rich environment. Staying in our here provides the perfect finale to our Africa safari holiday.

Approximate drive time: 6-7 hours. With stops total travel time of approximately 7 hours.

Meals: **B L D**



Accommodation
Camping

DAY 17

Cross the border and drive to Johannesburg. A single transfer to Johannesburg Airport is provided.

Making our final border crossing of our safari adventure, we cross back into South Africa and return to Johannesburg. Your holiday ends with drop off at Johannesburg Airport.

Approximate drive time: 7-8 hours. With stops total travel time of approximately 9-10 hours.

Meals: **B**

Holiday Information

What's Included

- Two professional and qualified guides
- Airport transfers on Day 1 and Day 17 of the Land Only itinerary
- All accommodation as described
- Meals as described in the Meal Plan
- National Park entrance fees
- All activities/excursions mentioned except where specified as 'optional'

What's not Included

- Travel Insurance
- Visas (if applicable)
- Some meals as detailed in the Meal Plan
- Any additional activities/excursions indicated as optional
- Tips for local staff
- Miscellaneous personal expenses - drinks and souvenirs etc

Joining Arrangements & Transfers

The group will meet at the hotel in Johannesburg.

On arrival airport transfers are provided for all clients to the group hotel.

Return flights, on the last day of holiday, should not depart before 1900. On the last day of the land only itinerary the tour will end in the late afternoon at the group hotel near Johannesburg Airport via one stop at the airport.

Hotel contact details and an emergency number will be provided with your booking confirmation.

Meal Plan

15 breakfasts, 13 lunches and 11 dinners are included in the price of your holiday. Non-included meals are in Johannesburg, Victoria Falls, Gweta and Maun where we dine in a lodge or local restaurant. We recommend you budget £10-15 for each of these meals.

Food & Water

Many places on this holiday have drinkable water from the tap to fill your personal water bottles. Please check with the leader at the various locations. Please take purification tablets or a filter bottle (such as a [Water-To-Go bottle](#)) for days when drinking water out of the tap is not available. We do not encourage the purchasing of single use plastic bottles.

The majority of the meals are provided. Breakfast will be cereals and yoghurt, with coffee, tea, toast and the occasional cooked breakfast. Lunch will typically be picnic style - cold meats, cheese, salads, bread, rolls and fruit. Dinner will be potjies (traditional stews), braais (barbecue), stir fries, pasta dishes, curries etc. Very often cooking will be on an open fire. Fresh produce will be used wherever possible and fruit squash, tea and coffee will be served with breakfast and dinner. Many of the meals are prepared by the guides and it is good group etiquette to help with preparation and washing up on these days and this is usually done on rotation. Some meals are taken at the accommodation or in local restaurants. Special dietary requirements (vegetarian or allergies) can usually be catered for, but it is essential that this information is received on booking. There is one cool box available for the group to put your own drinks in. Stops at supermarkets are regular to pick up supplies such as alcohol and soft drinks.

Special Diets

Whilst we can cater for vegetarians, albeit sometimes with a more limited choice, we cannot always provide special diets. Due to the nature of some of the trips that we operate and the countries in which we operate them, it can be very hard (and sometimes impossible) to cater for a wide range of dietary choices and you may have to supplement your diet with food/snacks from home. If you have specific dietary requirements please do speak to our sales team and they will be able to advise you whether or not we will be able to offer your specific choice. Please note that we are unable to provide separate menus and cannot accept liability for any problems arising from special dietary requirements or intolerances.

Accommodation

In Johannesburg you will stay in comfortable tourist standard hotels in twin rooms with en-suite facilities.

When camping we stay at designated campsites, in or bordering national parks and towns. Campsite facilities are generally very good but in places can be basic. There are hot and cold showers, restaurants and washing facilities available at most of the campsites. A few of the campsites have swimming pools as well. We supply all the camping equipment with the exception of your sleeping bag and pillow. The dome tents we use are 2.2 x 2.2 x 1.8 meters and putting them up or down takes only 5 minutes. Tents have built-in insect nets. We supply mattresses, which are about 5 cm thick, warm and comfortable. The camp chairs have a backrest.

Wild camping - for 2 nights while in the Okavango Delta we camp wild. Wild camps have no facilities; we take our own water and all equipment. Wild camping is very enjoyable and please remember that we leave no trace of our stay and take all rubbish away with us. A toilet tent and a simple bucket bush shower will be provided.

You will need to put your tent up, and help pack up the truck in the mornings. Most of the meals are prepared by the guides and it is good group etiquette to help with preparation and washing up on these days and this is usually done on rotation - it's all part of the adventure and when everyone puts in a little effort the trip runs smoothly.

If you are travelling by yourself, you will be paired up with another single client of the same sex. Single tents and rooms are available for a supplementary cost. If you are planning on extending your holiday additional nights at the group accommodation are available on request.

All accommodation is subject to change without prior warning.

SAFARI TRUCKS

Years of safari experience into the design of the trucks. The trucks are built to comply with the latest South African transport and safety regulations. Your comfort is catered for with individual seats (with safety belts), ample legroom and large vertical sliding windows for unobstructed viewing and photography.

There are roof hatches for excellent "open" views and an integral cab and passenger compartment so contact with the driver is easy. Each truck also has large packing compartments, a built in kitchen, freezer, drinking water tank, interior lights and a gas stove (to minimise use of wood and destruction of forest areas). There is also a pullout set of steps into the passenger compartment, making access for clients easier. There is usually a bank of plug sockets in the vehicles. These plugs are the South African 3 round pin or 2 round pin with a hexagonal base. We also use minibuses for some small group safaris. All of our vehicles are bought new and serviced by Mercedes and Toyota agents, thus ensuring trouble free touring with backup support in practically every town in Southern Africa.

Where road conditions allow, such as South Africa and parts of Botswana we may also use minibuses. On 5% of tours we may use minibuses with 12 seats and air conditioning (with trailer for equipment and baggage). The safaris often have several long days of travel providing for a beautiful journey on the way to exciting and varied destinations.

LAND CRUISERS (Okavango)

The 4 wheel drive vehicles are based in Maun. For the national parks of Botswana we use these custom

built 4WDs, with individual "bucket" seats, with trailers for the equipment. These land cruisers also have a bank of plug sockets or USB ports for charging.

These custom built game viewing vehicles are the first of their kind in Botswana. Each new vehicle has a built in "roll cage" that conforms to the latest safety standards of South Africa, and each individual bucket seat has a lap belt. The vehicles are constructed by a registered coach builder and ensure structural integrity of the passenger cabin in the unlikely event of a roll.

Group Leader & Support Staff

Group leaders are the key to any successful safari. On this adventure safari, you will travel with two qualified and experienced, registered field guides (FGASA). Two guides as crew, not a guide and a driver, adds up to an informative and interesting small group holiday. Our guides have a passion for Africa, her people and wildlife, and they love nothing more than sharing their knowledge with you.

Spending Money

We estimate that a total of around £375-425 per person (or equivalent in euros/dollars) should be allowed for personal spending. This amount should be sufficient to cover non-included meals and miscellaneous expenses, including tips to local staff. If you are intending to buy expensive souvenirs, considerable quantities of soft drinks / beer or undertake additional activities or excursions, you should budget accordingly (credit cards can be useful in this respect). You can choose to take your money in pounds sterling, dollars or euros. There will be the opportunity to change money into local currency on arrival at the airport (which we advise you to do) and your local leader will advise further places to change money en-route and at borders. Additionally, you will be able to get currency from bank ATMs in many of the towns that we will visit.

Many small traders will accept US\$, Euro or GBP. Your notes should be clean and undamaged. And please avoid USD\$100 and old issue 'small head' US\$ notes as they might not be accepted.

On day 1, on arrival at the hotel in Johannesburg you can book a half-day SOWETO tour for \$75 per person, or an afternoon tour to Maropeng Cradle of Humankind and Sterkfontien Caves is also bookable for \$100 per person (min 2 people). Please check that Sterkfontien Caves are open, as they can close due to high water levels. Both of these tours should be booked on arrival (before 12midday) with our local agent and are payable locally in cash.

Guidance on Tipping

Your tour leader also works extremely hard to ensure that your holiday runs smoothly and that you are happy. We suggest that a tip of £2-5 per client per day for your tour leader is reasonable. When it comes to tipping the guides that we sometimes use for various activities (e.g. game walks, polers in the Okavango Delta etc) we suggest that a tip of £1-3 per client per ½ day activity, or the local currency equivalent, is acceptable. As in all cases with tipping, the final decision of the amount tipped is up to the individual. It is up to you to decide if you thought the service was poor, or exceptional, and the amount tipped should reflect that. The amounts quoted above are guidelines for you to get an idea of what to tip.

Baggage Allowance

For this holiday you should take one piece of luggage and a daypack. Your baggage will travel in the gear compartment of the truck with the group, and there is a finite amount of space. Please keep the weight of your main luggage to 12kg. You should bring a soft bag as these are more suitable to pack in the vehicle. For the 2 nights wild camping in the Okavango Delta you will take only what you need and your main bag will remain in Maun.

Group Size & Holiday Status

For each holiday there is a minimum number of participants required to enable it to go ahead. Once the minimum number is reached, the trip status will change from 'Available' to 'Guaranteed to run'. You can check the trip status for each departure in 'Dates and Prices' table. Other than in exceptional circumstances, we will not cancel a trip once it has achieved this guaranteed to run status and so you are free to proceed with your international flight booking and other travel arrangements.

Group Members

We sell this holiday in conjunction with our local operator in Southern Africa. This enables us to gather together sufficient numbers of like-minded adventurers to get the holiday up and running quickly. For this holiday the minimum age is 12 yrs, however it is unusual to have people under 16yrs.

South Africa Indemnity Form

As a member of the South African Tourism Service Association, our ground agent in South Africa may require you to complete an indemnity form at the start of your holiday, which you will need your insurance details for. As a client of KE Adventure Travel, your rights under the Package Travel and Linked Travel Arrangement Regulations (2018) are unaffected and KE Adventure Travel will remain liable for the actions of our suppliers.

General Information

Passport & Visas

The information that we provide is for UK passport holders. A passport with 6 months remaining validity at the end of your stay is generally required, and you should have at least 2 blank pages for each country that you visit.

It is your responsibility to ensure that you have the correct travel documents and visas for your holiday.

Please ensure that you check for the latest advice before travel. For the most up to date information on entry requirements, please visit the [UK Government website](#).

Visa Zambia

British passport holders do not need a visa in advance and can obtain a visa on arrival. The Government of Zambia recently announced the removal of all visa fees for British passport holders. However implementation of the policy has not yet been confirmed and British nationals may still be charged \$25 on arrival.

Other nationals should check details online to see if they need an e-visa.

Important Note for Victoria Falls: Please check your itinerary and your arrival/departure flights. If your accommodation and flights are from a different side of the falls you may need both a Zambian and a Zimbabwe visa. The town of Victoria Falls is in Zimbabwe, and the town of Livingstone is in Zambia.

Additionally If you visit the falls (on the border) and wish to cross the bridge to the other side you will require a visa for both countries.

A KAZA UNIVISA for Zimbabwe and Zambia is cheaper than purchasing the two visas for Zambia and Zimbabwe separately. The visa is valid for 30 days as long as you remain within Zimbabwe and Zambia. It is also valid for day trips to Botswana crossing over the Kazungula borders. It will not be valid if you overnight in Botswana.

It's available at the international airports in Lusaka and Livingstone and at the land borders at Livingstone (Zimbabwe border) and Kazungula (Botswana border). You can also apply online. It costs US\$50 and it is valid for 30 days.

Please note: The Government of Zambia recently announced the removal of all visa fees for British passport holders. However implementation of the policy has not yet been confirmed and British nationals may still be charged \$25 on arrival. This may affect your decision to purchase a Kaza Univisa.

UK nationals do not normally need a visa to enter Botswana for stays of up to 90 days.

Travelling with children under 18yrs - Botswana

Parents travelling with children under 18 years will be asked to show the child's full unabridged birth certificate. If the child is travelling with one parent, with another adult or unaccompanied, the parent or parents who aren't present will need to provide an affidavit giving their consent for the child to travel. Please note that they are very strict and they do not accept photocopies of birth certificates or short versions. This is also applicable if you are transiting through Botswana. For further details please see FCO website <https://www.gov.uk/foreign-travel-advice/botswana/entry-requirements>

Visa South Africa

UK and USA passport holders do not require a visa for short stays. You must have 2 blank pages in your passport.

Rules on **travelling with children under 18 years** have been relaxed. Visa exempt children entering South Africa only need passports, and not birth certificates as previously required. This applies if the child is travelling with both parents, one parent or an adult who is not a biological parent, and school groups. There are some different requirements for unaccompanied children, and children who do not have UK passports or visa exempt passports. For full details please see the FCDO website.

Visa Zimbabwe

A visa is required. This is obtained on arrival and is \$55 single entry and \$70 for double. Payment must be in cash and you should take small denomination notes for this.

Important Note: Please check your itinerary and your arrival/departure flights. If your accommodation and flights are from a different side of the falls you may need both a Zambian and a Zimbabwe visa. The town of Victoria Falls is in Zimbabwe, and the town of Livingstone is in Zambia.

Additionally If you visit the falls (on the border) and wish to cross the bridge to the other side you will require a visa for both countries.

Health & Vaccinations

If you have a severe allergy please inform the KE office before you travel. We will do all we can to help, but we cannot guarantee an allergy free environment on KE trips. You will need to carry your own treatment for the allergy with you, as 'adrenaline auto-injectors' are not carried as standard by KE leaders and staff. You should inform your leader on arrival of your allergy, and let them know where you keep your adrenaline pen.

VACCINATIONS

You should contact your doctor or travel clinic to check whether you specific require any vaccinations or other preventive measures. You should be up to date with routine courses and boosters as recommended in the UK e.g. diphtheria-tetanus-polio and measles-mumps-rubella), along with hepatitis A and typhoid. Malarial prophylaxis are required. A certificate of yellow fever vaccination is required if travelling from countries with risk of yellow fever transmission and for travellers having transited for more than 12 hrs through an airport of a country with risk of yellow fever transmission. On holidays to more remote areas you should also have a dentist check up. A good online resource is [Travel Health Pro](#).

Currency

The unit of currency in South Africa is the South African Rand.

The unit of currency in Botswana is the Pula.

The unit of currency in Zambia is the Zambian Kwacha.

The unit of currency in Zimbabwe is the Zimbabwean Dollar. There is currently a shortage of available cash at the banks and ATM's in Zimbabwe. So we advise you to bring a credit card for any payments in Zimbabwe.

Climate

South Africa: May to August can be cool to very cold (in mountains) and days are pleasant and sunny in the north. September to April is pleasant, warm to hot with thunder showers in the north. January to early March light showers to heavy rains may occur throughout the country.

Botswana & Zimbabwe: This Central region of Southern Africa is subtropical being generally warm and mild to humid. October and November are hot, day and night. November to April is the hottest time of the year with chances of showers to heavy rains later in the season. May to September is cool and dry.

Travel Aware

As a reputable tour operator, KE supports the British Foreign, Commonwealth and Development Office's '[Travel Aware](#)' campaign to enable British citizens to prepare for their journeys overseas. The 'Travel Aware' website provides a single, authoritative source of advice for all kinds of travellers and we recommend that prior to travel, all KE clients visit the official UK Government website at travelaware.campaign.gov.uk and read the FCDO Travel Advice for their chosen destination. North Americans can also check out the U.S. Department of State website: www.travel.state.gov for essential travel advice and tips.

KE treat the safety and security of all clients as the most important aspect of any trip we organise. We would not run any trip that we did not consider reasonably safe. Should the FCDO advise against travel for any reason, we will contact everyone booked to travel to discuss the situation. We receive regular updates direct from the FCDO and are in constant touch with our contacts on the ground. If you have any questions about government travel advice, please call our office.

Single Use Plastic

KE do not encourage the use of single use plastic items. We are ensuring that our agents all over the world are working together to reduce the problem and educate those around them. We are leading by example in our KE office by reducing our plastic use.

Travel Insurance

It is an essential condition of joining a holiday with KE Adventure Travel that you have a valid travel insurance policy to cover the cost of medical treatment and to protect the value of your holiday in the event of cancellation. When taking out insurance please ensure the policy you choose covers you for the activities and altitude included in your itinerary.

For appropriate insurance cover we recommend Campbell Irvine Direct. Please go to our [Travel Insurance](#) page for further information and to get a quote.

Please note that a paper copy of your travel insurance is required if you are travelling to Huaraz and the Huayhuash region.

Equipment Information

Equipment List

Please try to keep the weight of your baggage to a minimum. See the 'baggage allowance' section for further details.

You should bring the following items:

- Lightweight walking shoes or trainers
- Sandals
- Socks and underwear
- Long lightweight trousers
- Shorts
- Lightweight waterproof jacket & trousers
- T-shirts
- Casual shirts with sleeves
- Fleece jacket or warm jumper
- Sunhat with wide brim
- Sunglasses
- Buff/scarf for dusty days
- Small towel/Travel towel
- Daypack 20-25 litres
- Sleeping bag*. Comfort rating 0 degrees C (Jun-Sep) and thinner sleeping can be used during the rest of the year.
- Headtorch and spare batteries
- Sun protection (including total bloc for lips, nose etc.)
- Water bottles 1 litre (x2) (we encourage re-filling water bottles rather than single use plastic)
- Water purification tablets
- Washbag and toiletries (biodegradable soap is preferred)
- Antibacterial handwash
- Insect repellent
- Basic First Aid Kit including: antiseptic cream, throat lozenges, diarrhoea treatment (Imodium), painkillers, plasters and blister treatment, re-hydration salts (Dioralite), anti-nausea tablets and

antihistamine cream/tablets.

The following items are optional:

- Light cotton dress or sarong
- Swimwear
- Pen-knife (remember to pack sharp objects in hold baggage)
- Repair kit (eg. needle, thread, duct tape)
- A selection of dry bags for daypack/kit bag
- Camera
- Binoculars (highly recommended)
- Reusable cloth bag for shopping (to avoid plastic bags)

Notes:

Please be aware that in the Southern African the winter months, June-September, the nights can be cold with an average of between 0-5 degrees Celsius in some places, and the days can be warm between 20-30 degrees Celsius.

Bright bold colours and white are not suitable for game viewing or bush wear as they attract insects and the attention of animals. Please do not bring camouflage or military style clothes as they can cause problems with local authorities.

Please dress appropriately for border crossings, village and market visits – ie: no bare feet, no bare chests, no bikinis and no hats. A few restaurants are also not keen on T-shirts and jeans either.

Tents have mosquito netting on the windows and doors. Sleeping mattresses of 5cm thick are provided.

*It is possible to hire a sleeping bag for this holiday.

Cotswold Outdoor



Many of the Equipment items listed above are available from [Cotswold Outdoor](#) - our '**Official Recommended Outdoor Retailer**'. When you book a holiday with KE you will receive 12.5% discount voucher from Cotswold Outdoor and other retailers.
[-> Find out more](#)

Land Only Information

The LAND ONLY dates and prices are for the itinerary joining in Johannesburg. Airport transfers are provided.

Flight Inclusive Information

The FLIGHT INCLUSIVE dates and prices are based on UK flights from London to Johannesburg.

Outbound flights will depart from the UK in the evening, arriving the morning of the following day (day 1 of the Land Only itinerary). Return flights will depart Johannesburg in the evening of the last day of the land only itinerary, arriving in the UK the following morning.

Why Choose KE

Why KE

This beautiful safari does game drives in the National Parks of Kruger in South Africa, Hwange in Zimbabwe and Chobe in Botswana. This gives us ample time to see a variety of wildlife, special UNESCO sites and meet many smiling people along the way.

Please Note This document was downloaded on 20/05/2024 and the trip is subject to change